



Rolling Outrigger Beam, 5x5

Beam Kits



920514
16 ft Rolling
Outrigger



920524
24 ft Rolling Outrigger



920527
24 ft Rolling Outrigger
with Cable Truss



920528
24 ft Rolling Outrigger
with 8 ft Splice Tube

Description

Versatile! The Rolling Outrigger Beam System is based around the strong aluminum 5x5 H-beam, allowing versatility in beam lengths and outreaches. Many accessories are available to solve almost any rigging challenge.

The standard Rolling Outrigger packages will clear a 6 ft parapet wall and allow outreaches up to 8 ft. The Caster Dollies mount on top of 5 ft wide scaffold frames for unlimited height clearance. Many configurations are possible with outreaches up to 14 ft.

Specifications

Part No.:

- 920514 Rolling Outrigger, 5x5 16 ft LCJ
- 920524 Rolling Outrigger, 5x5 24 ft LCJ
- 950527 Rolling Outrigger, 5x5 24 ft LLCJT
- 950528 Rolling Outrigger, 5x5 24 ft LLCJ8

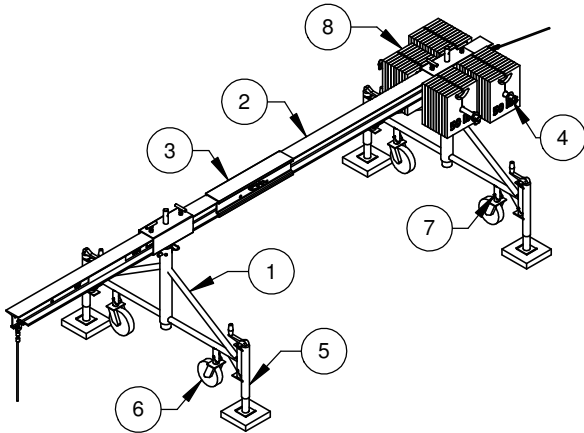
Load Capacity: 750 to 1500 lb

Outreach: 5 ft w/o truss, 7 ft w/truss, 8 ft w/8 ft splice tube

Dimensions: 44-72"x60"x16-24' (HxWxL)

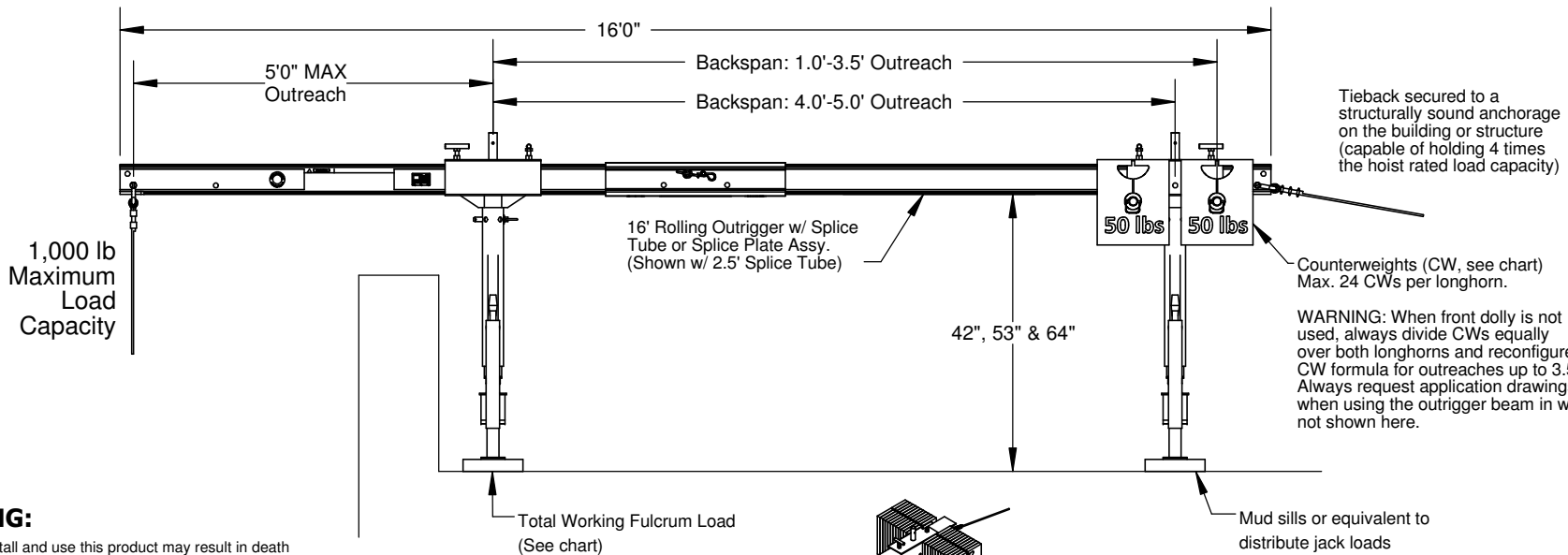
Weight: 418, 489, 521 and 550 lb

Outreach (ft.-in.)	Backspan (ft.-in.)	Total Working Fulcrum Load (lb)	Working Fulcrum Load per Leg (lb)	50 lb CW Required
1'0"	14'1"	1,071	536	6
1'6"	13'7"	1,111	556	9
2'0"	13'1"	1,153	577	12
2'6"	12'7"	1,199	600	16
3'0"	12'1"	1,249	625	20
3'6"	11'7"	1,303	652	24
4'0"	10'6"	1,381	690	30
4'6"	10'0"	1,450	725	36
5'0"	9'6"	1,527	764	42



ITEM NO.	QTY.	PART NO.	DESCRIPTION
1	2	920115	Adjustable Caster Dolly, 5X5
2	2	620101	H-Beam, 5x5 Front/Back 8ft
3	1	920177	Splice Tube Assembly, 2.5 ft
4*	2*	920160	Longhorn Assy., 40in
5	4	520125	Jack Assembly, Caster Dolly
6	4	823104	Scaffold Caster, 8" HD900
7	8	110103	Hitch Pin 5/16" X 2.25"
8	TBD	820104	Counterweight, 50 lb
9	2	920150	Outrigger Brace

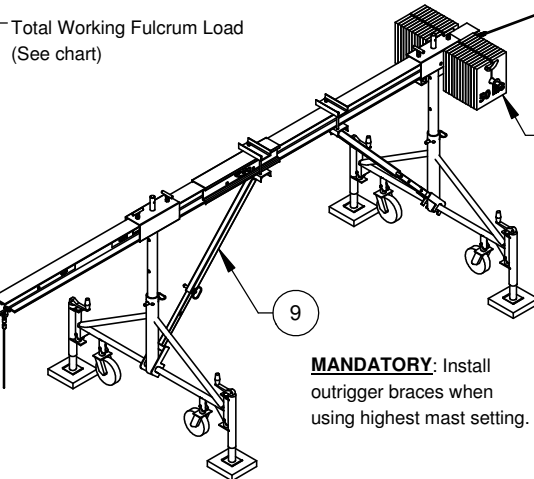
*Use of 1 Longhorn Assy. allowed on outreaches up to 3.5'. Longhorn Assy. includes: (2) 1-3/8" Washers and (3) 5/16"x2.25" Hitch Pins.



Tieback secured to a structurally sound anchorage on the building or structure (capable of holding 4 times the hoist rated load capacity)

Counterweights (CW, see chart) Max. 24 CWs per longhorn.

WARNING: When front dolly is not used, always divide CWs equally over both longhorns and reconfigure CW formula for outreaches up to 3.5'. Always request application drawings when using the outrigger beam in ways not shown here.



Setup shown with 1 Longhorn Assy. for 1.0' to 3.5' outreaches

MANDATORY: Install outrigger braces when using highest mast setting.

WARNING:

Failure to properly install and use this product may result in death or serious injury. Follow the manufacturer's instruction manual. Suspended Scaffold Systems must be installed and dismantled by, or under the supervision of, a trained and competent person.

Bee Access declines any responsibility for any special layouts, rigging or structural combinations beyond the descriptions of this drawing. Any installation of this equipment other than in strict accordance with this drawing shall be at the Operator's risk.

Never let the equipment be moved or operated by unauthorized personnel.

Never load this equipment above its rated load capacity.

Do not alter any products and never use it for purposes or in ways for which it was not intended.

Inspect all equipment before each use. Never use damaged equipment.

Read and comply with the "Code of Safe Practices for Suspended Powered Scaffolds" issued by the Scaffold & Access Industry Association (available from your supplier).

The information contained in this drawing is the sole property of Bee Access Products. Any reproduction in part or whole without the written permission of Bee Access Products is strictly prohibited.



Bee Access Products

CW Chart 16ft ROB - 1,000 lb

Scale: 1:30
Do not scale drawing.
Weight: 2497 LBS

Product Line/Project:

Rigging

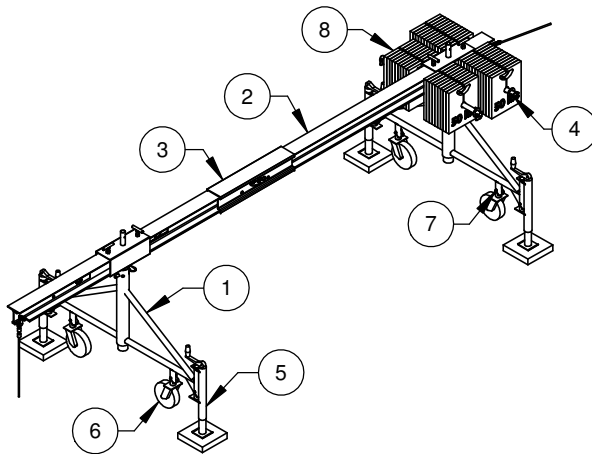
REV. 1

Approvals: Drawn: SBS
By: SBS
Date: 04-01-15

Part No. 920514

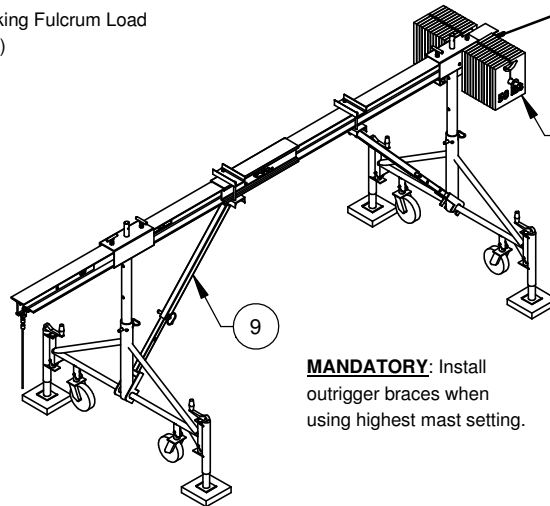
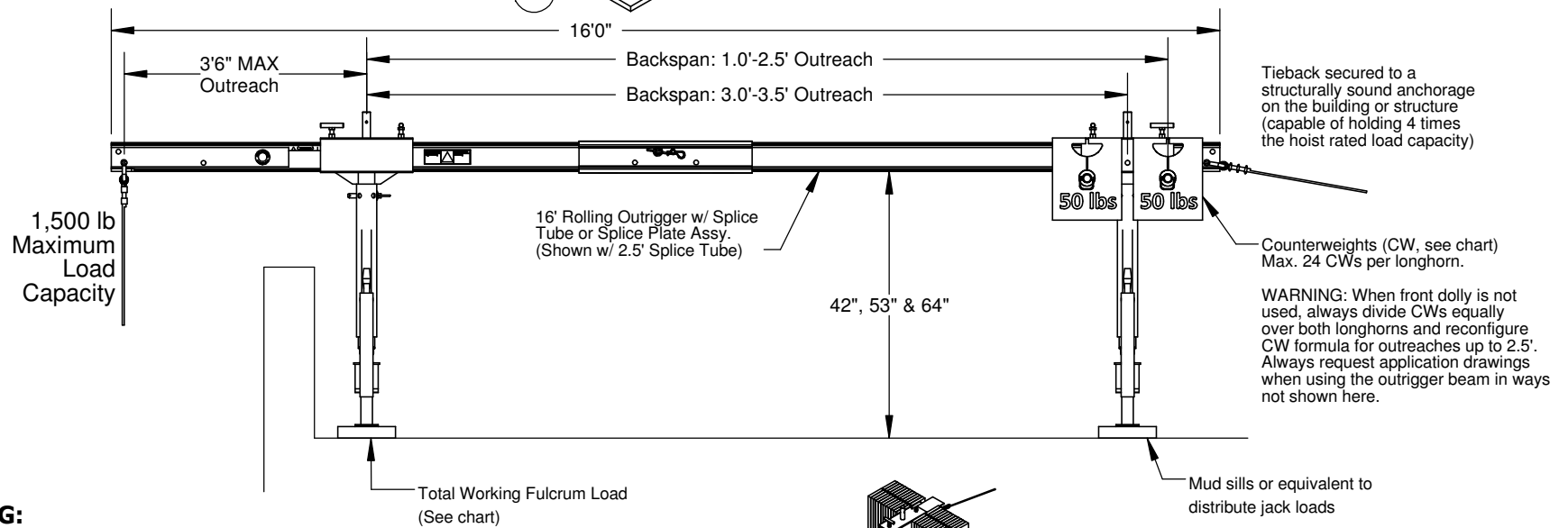
Sheet 1 of 4

Outreach (ft.-in.)	Backspan (ft.-in.)	Total Working Fulcrum Load (lb)	Working Fulcrum Load per Leg (lb)	50 lb CW Required
1'0"	14'1"	1,607	804	9
1'6"	13'7"	1,666	833	13
2'0"	13'1"	1,730	865	18
2'6"	12'7"	1,798	899	24
3'0"	11'6"	1,892	946	30
3'6"	11'0"	1,978	989	38



ITEM NO.	QTY.	PART NO.	DESCRIPTION
1	2	920115	Adjustable Caster Dolly, 5X5
2	2	620101	H-Beam, 5x5 Front/Back 8ft
3	1	920177	Splice Tube Assembly, 2.5 ft
4*	2*	920160	Longhorn Assy., 40in
5	4	520125	Jack Assembly, Caster Dolly
6	4	823104	Scaffold Caster, 8" HD900
7	8	110103	Hitch Pin 5/16" X 2.25"
8	TBD	820104	Counterweight, 50 lb
9	2	920150	Outrigger Brace

*Use of 1 Longhorn Assy. allowed on outreaches up to 2.5'. Longhorn Assy. includes: (2) 1-3/8" Washers and (3) 5/16"x2.25" Hitch Pins.



MANDATORY: Install outrigger braces when using highest mast setting.

WARNING:

Failure to properly install and use this product may result in death or serious injury. Follow the manufacturer's instruction manual. Suspended Scaffold Systems must be installed and dismantled by, or under the supervision of, a trained and competent person.

Bee Access declines any responsibility for any special layouts, rigging or structural combinations beyond the descriptions of this drawing. Any installation of this equipment other than in strict accordance with this drawing shall be at the Operator's risk.

Never let the equipment be moved or operated by unauthorized personnel.

Never load this equipment above its rated load capacity.

Do not alter any products and never use it for purposes or in ways for which it was not intended.

Inspect all equipment before each use. Never use damaged equipment.

Read and comply with the "Code of Safe Practices for Suspended Powered Scaffolds" issued by the Scaffold & Access Industry Association (available from your supplier).

The information contained in this drawing is the sole property of Bee Access Products. Any reproduction in part or whole without the written permission of Bee Access Products is strictly prohibited.



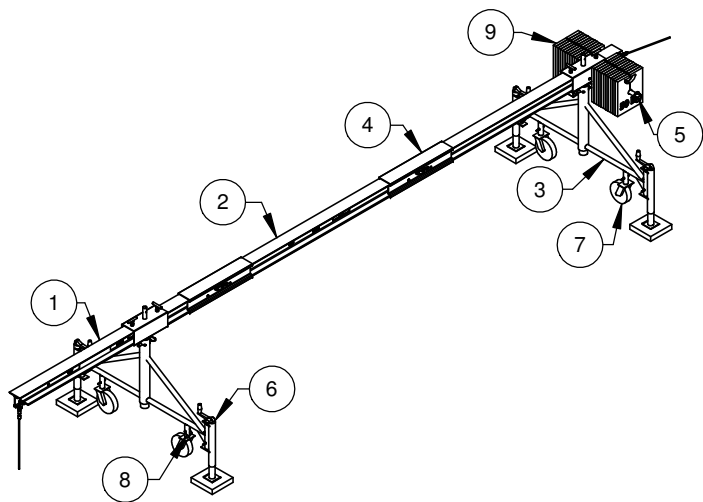
Bee Access Products

CW Chart 16ft ROB - 1,500 lb

Scale 1:30	Do not scale drawing.	Weight: 2497 LBS
Approvals Drawn	By: SBS	Date: 04-01-15

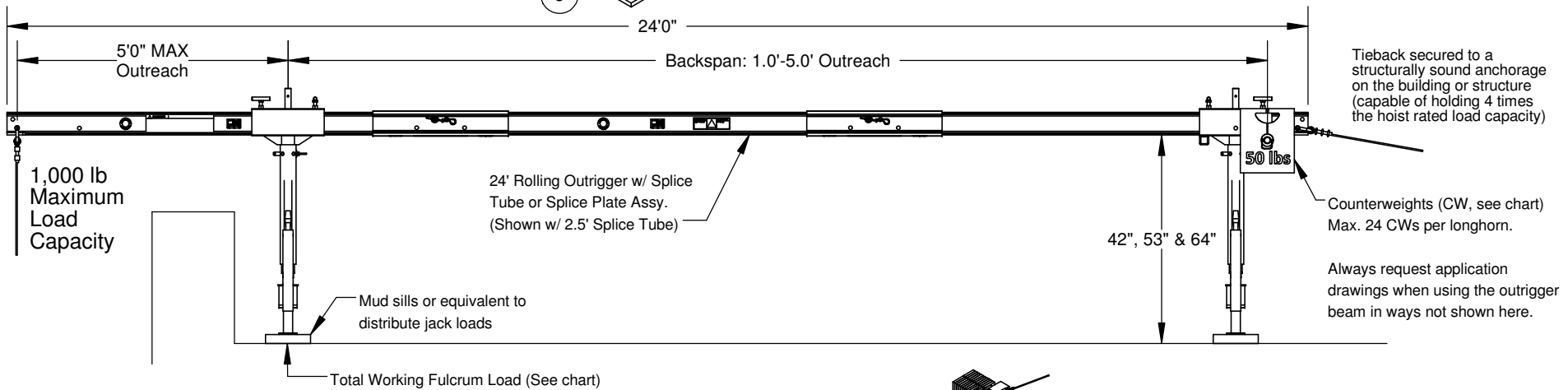
Product Line/Project: Rigging	REV. 1
Part No. 920514	Sheet 1 of 3

Outreach (ft.-in.)	Backspan (ft.-in.)	Total Working Fulcrum Load (lb)	Working Fulcrum Load per Leg (lb)	50 lb CW Required
1'0"	22'1"	1,046	523	4
1'6"	21'7"	1,069	535	6
2'0"	21'1"	1,095	548	8
2'6"	20'7"	1,121	561	10
3'0"	20'1"	1,150	575	12
3'6"	19'7"	1,179	590	14
4'0"	19'1"	1,210	605	17
4'6"	18'7"	1,243	622	20
5'0"	18'1"	1,276	639	22



ITEM NO.	QTY.	PART NO.	DESCRIPTION
1	2	620101	H-Beam, 5x5 Front/Back 8ft
2	1	620102	H-Beam, 5x5 Middle 8ft
3	2	920115	Adjustable Caster Dolly, 5X5
4	2	920177	Splice Tube Assembly, 2.5 ft
5*	1	920160	Longhorn Assy., 40in
6	4	520125	Jack Assembly, Caster Dolly
7	4	823104	Scaffold Caster, 8" HD900
8	8	110103	Hitch Pin 5/16" X 2.25"
9	TBD	820104	Counterweight, 50 lb
10	2	920150	Outrigger Brace

*Longhorn Assy. includes: (2) 1-3/8" Washers and (3) 5/16"x2.25" Hitch Pins.



⚠ WARNING:

Failure to properly install and use this product may result in death or serious injury. Follow the manufacturer's instruction manual. Suspended Scaffold Systems must be installed and dismantled by, or under the supervision of, a trained and competent person.

Bee Access declines any responsibility for any special layouts, rigging or structural combinations beyond the descriptions of this drawing. Any installation of this equipment other than in strict accordance with this drawing shall be at the Operator's risk.

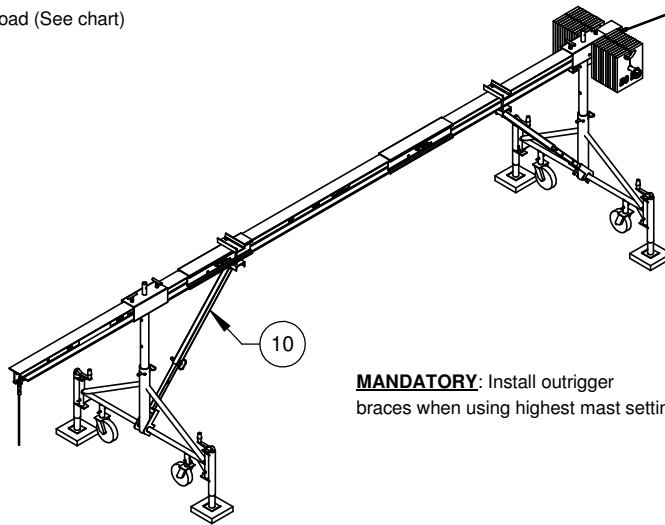
Never let the equipment be moved or operated by unauthorized personnel.

Never load this equipment above its rated load capacity.

Do not alter any products and never use it for purposes or in ways for which it was not intended.

Inspect all equipment before each use. Never use damaged equipment.

Read and comply with the "Code of Safe Practices for Suspended Powered Scaffolds" issued by the Scaffold & Access Industry Association (available from your supplier).



The information contained in this drawing is the sole property of Bee Access Products. Any reproduction in part or whole without the written permission of Bee Access Products is strictly prohibited.



Bee Access Products

CW Chart 24ft ROB - 1,000 lb

Scale: 1:35
Do not scale drawing.
Weight: 1551 LBS

Product Line/Project: **Rigging** REV. 1

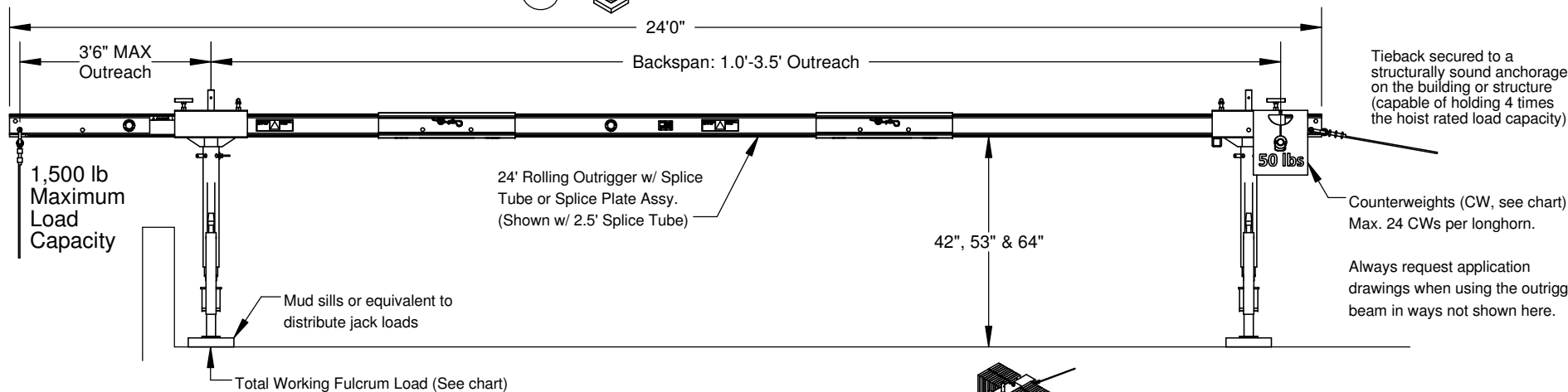
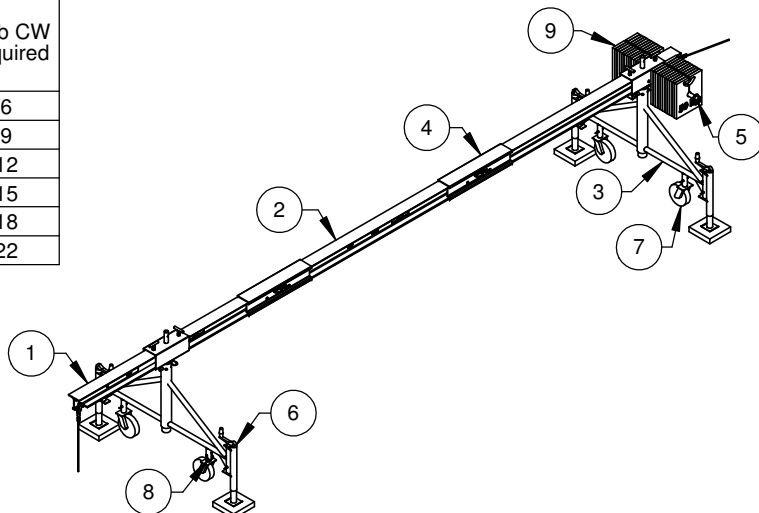
Approvals: Drawn: SBS
By: SBS
Date: 04-09-15

Part No. 920524 Sheet 2 of 4

Outreach (ft.-in.)	Backspan (ft.-in.)	Total Working Fulcrum Load (lb)	Working Fulcrum Load per Leg (lb)	50 lb CW Required
1'0"	22'1"	1,568	784	6
1'6"	21'7"	1,605	803	9
2'0"	21'1"	1,643	822	12
2'6"	20'7"	1,683	842	15
3'0"	20'1"	1,725	862	18
3'6"	19'7"	1,769	884	22

ITEM NO.	QTY.	PART NO.	DESCRIPTION
1	2	620101	H-Beam, 5x5 Front/Back 8ft
2	1	620102	H-Beam, 5x5 Middle 8ft
3	2	920115	Adjustable Caster Dolly, 5X5
4	2	920177	Splice Tube Assembly, 2.5 ft
5*	1	920160	Longhorn Assy., 40in
6	4	520125	Jack Assembly, Caster Dolly
7	4	823104	Scaffold Caster, 8" HD900
8	8	110103	Hitch Pin 5/16" X 2.25"
9	TBD	820104	Counterweight, 50 lb
10	2	920150	Outrigger Brace

*Longhorn Assy. includes: (2) 1-3/8" Washers and (3) 5/16"x2.25" Hitch Pins.



⚠ WARNING:

Failure to properly install and use this product may result in death or serious injury. Follow the manufacturer's instruction manual. Suspended Scaffold Systems must be installed and dismantled by, or under the supervision of, a trained and competent person.

Bee Access declines any responsibility for any special layouts, rigging or structural combinations beyond the descriptions of this drawing. Any installation of this equipment other than in strict accordance with this drawing shall be at the Operator's risk.

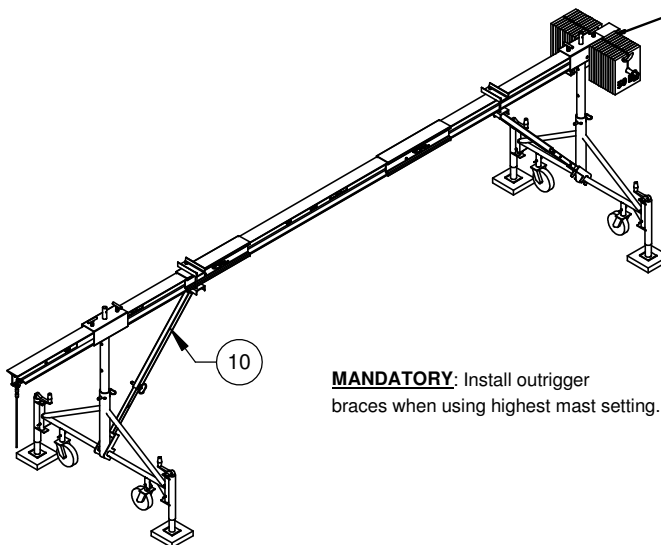
Never let the equipment be moved or operated by unauthorized personnel.

Never load this equipment above its rated load capacity.

Do not alter any products and never use it for purposes or in ways for which it was not intended.

Inspect all equipment before each use. Never use damaged equipment.

Read and comply with the "Code of Safe Practices for Suspended Powered Scaffolds" issued by the Scaffold & Access Industry Association (available from your supplier).



The information contained in this drawing is the sole property of Bee Access Products. Any reproduction in part or whole without the written permission of Bee Access Products is strictly prohibited.



Bee Access Products

CW Chart 24ft ROB - 1,500 lb

Scale: 1:35
Do not scale drawing.
Weight: 1551 LBS

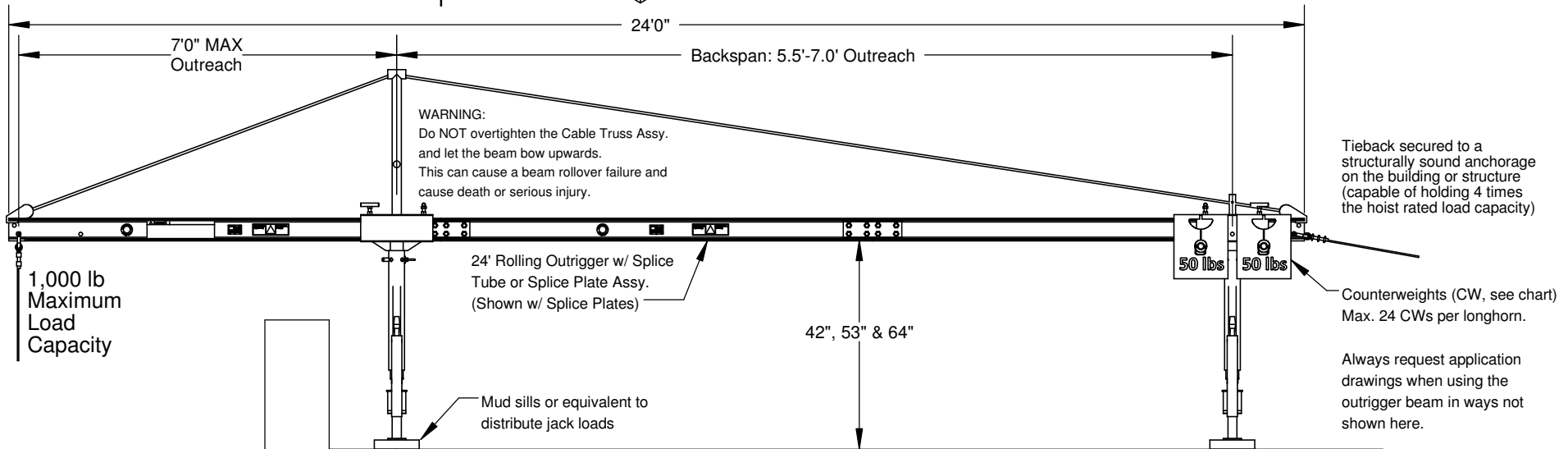
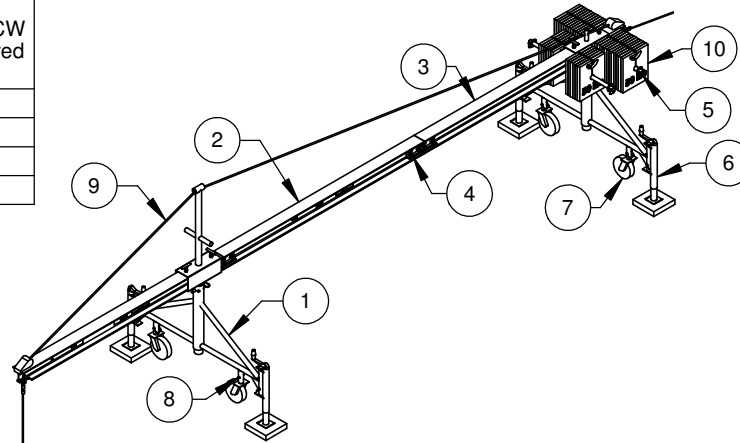
Approvals: Drawn: SBS
By: SBS
Date: 04-09-15

Product Line/Project: **Rigging**
REV. **1**
Part No. **920524**
Sheet **2 of 3**

Outreach (ft.-in.)	Backspan (ft.-in.)	Total Working Fulcrum Load (lb)	Working Fulcrum Load per Leg (lb)	50 lb CW Required
5'6"	17'0"	1,324	662	25
6'0"	16'6"	1,364	682	29
6'6"	16'0"	1,407	704	32
7'0"	15'6"	1,452	726	36

ITEM NO.	QTY.	PART NO.	DESCRIPTION
1	2	920115	Adjustable Caster Dolly, 5X5
2	1	620102	H-Beam, 5x5 Middle 8ft
3	2	620101	H-Beam, 5x5 Front/Back 8ft
4	2	320111	Splice Plate Assembly, 5x5
5*	2	920160	Longhorn Assy., 40in
6	4	520125	Jack Assembly, Caster Dolly
7	4	823104	Scaffold Caster, 8" HD900
8	8	110103	Hitch Pin 5/16" X 2.25"
9	1	320105	24ft Cable Truss Assy.
10	TBD	820104	Counterweight, 50 lb
11	2	920150	Outrigger Brace

*Longhorn Assy. includes: (2) 1-3/8" Washers and (3) 5/16"x2.25" Hitch Pins.



WARNING:

Failure to properly install and use this product may result in death or serious injury. Follow the manufacturer's instruction manual. Suspended Scaffold Systems must be installed and dismantled by, or under the supervision of, a trained and competent person.

Bee Access declines any responsibility for any special layouts, rigging or structural combinations beyond the descriptions of this drawing. Any installation of this equipment other than in strict accordance with this drawing shall be at the Operator's risk.

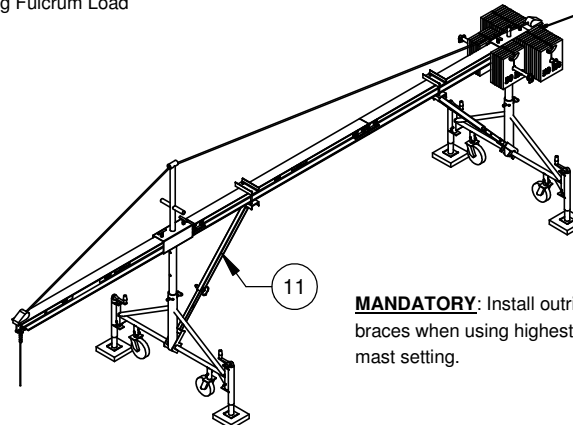
Never let the equipment be moved or operated by unauthorized personnel.

Never load this equipment above its rated load capacity.

Do not alter any products and never use it for purposes or in ways for which it was not intended.

Inspect all equipment before each use. Never use damaged equipment.

Read and comply with the "Code of Safe Practices for Suspended Powered Scaffolds" issued by the Scaffold & Access Industry Association (available from your supplier).



MANDATORY: Install outrigger braces when using highest mast setting.

The information contained in this drawing is the sole property of Bee Access Products. Any reproduction in part or whole without the written permission of Bee Access Products is strictly prohibited.



Bee Access Products

CW Chart 24ft ROB w/ Cable Truss - 1,000 lb

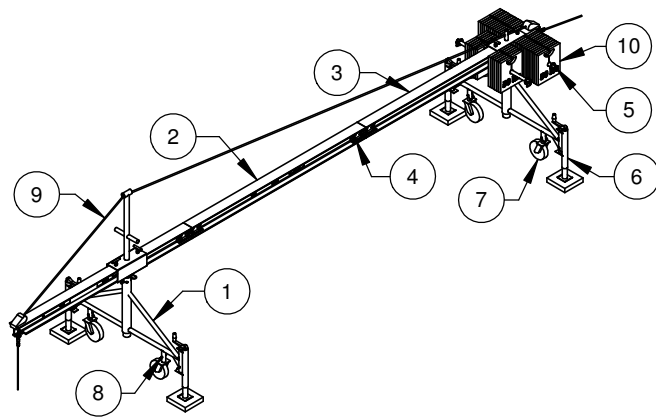
Scale: 1:35
Do not scale drawing.
Weight: 2317 LBS

Product Line/Project: **Rigging** REV. 1

Approvals: Drawn: SBS Date: 04-08-15

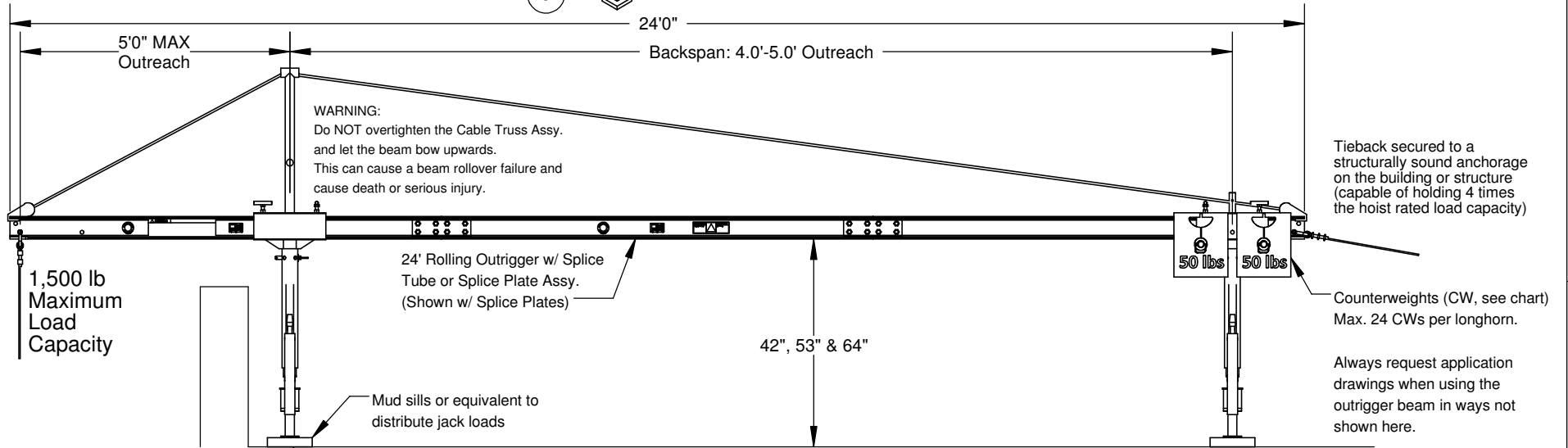
Part No. 920527 Sheet 3 of 4

Outreach (ft.-in.)	Backspan (ft.-in.)	Total Working Fulcrum Load (lb)	Working Fulcrum Load per Leg (lb)	50 lb CW Required
4'0"	18'6"	1,825	913	25
4'6"	18'0"	1,875	938	30
5'0"	17'6"	1,929	965	34



ITEM NO.	QTY.	PART NO.	DESCRIPTION
1	2	920115	Adjustable Caster Dolly, 5X5
2	1	620102	H-Beam, 5x5 Middle 8ft
3	2	620101	H-Beam, 5x5 Front/Back 8ft
4	2	320111	Splice Plate Assembly, 5x5
5*	2	920160	Longhorn Assy., 40in
6	4	520125	Jack Assembly, Caster Dolly
7	4	823104	Scaffold Caster, 8" HD900
8	8	110103	Hitch Pin 5/16" X 2.25"
9	1	320105	24ft Cable Truss Assy.
10	TBD	820104	Counterweight, 50 lb
11	2	920150	Outrigger Brace

*Longhorn Assy. includes: (2) 1-3/8" Washers and (3) 5/16"x2.25" Hitch Pins.



WARNING:

Failure to properly install and use this product may result in death or serious injury. Follow the manufacturer's instruction manual. Suspended Scaffold Systems must be installed and dismantled by, or under the supervision of, a trained and competent person.

Bee Access declines any responsibility for any special layouts, rigging or structural combinations beyond the descriptions of this drawing. Any installation of this equipment other than in strict accordance with this drawing shall be at the Operator's risk.

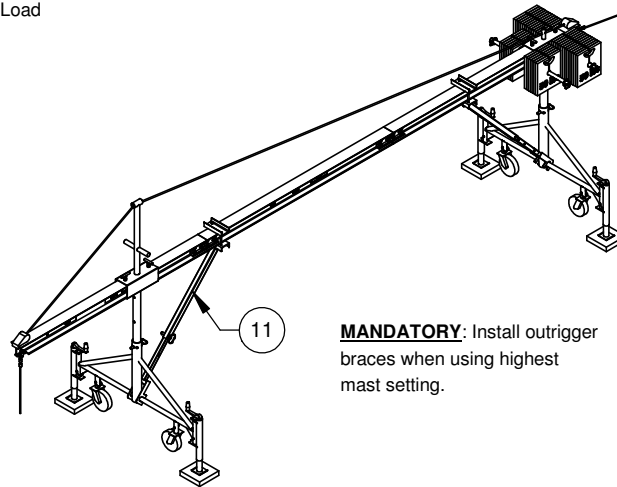
Never let the equipment be moved or operated by unauthorized personnel.

Never load this equipment above its rated load capacity.

Do not alter any products and never use it for purposes or in ways for which it was not intended.

Inspect all equipment before each use. Never use damaged equipment.

Read and comply with the "Code of Safe Practices for Suspended Powered Scaffolds" issued by the Scaffold & Access Industry Association (available from your supplier).



MANDATORY: Install outrigger braces when using highest mast setting.

The information contained in this drawing is the sole property of Bee Access Products. Any reproduction in part or whole without the written permission of Bee Access Products is strictly prohibited.



Bee Access Products

CW Chart 24ft ROB w/ Cable Truss - 1,500 lb

Scale: 1:35
Do not scale drawing.

Weight: 2317 LBS

Product Line/Project:

REV. 1

Approvals: Drawn: SBS

By: SBS

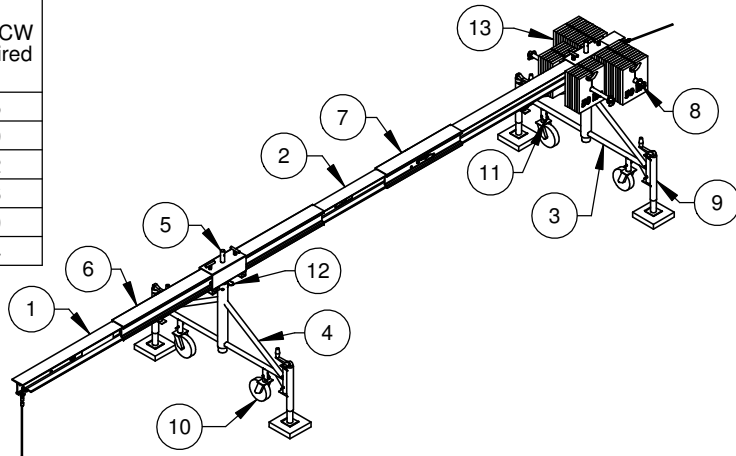
Date: 04-08-15

Rigging

Part No. 920527

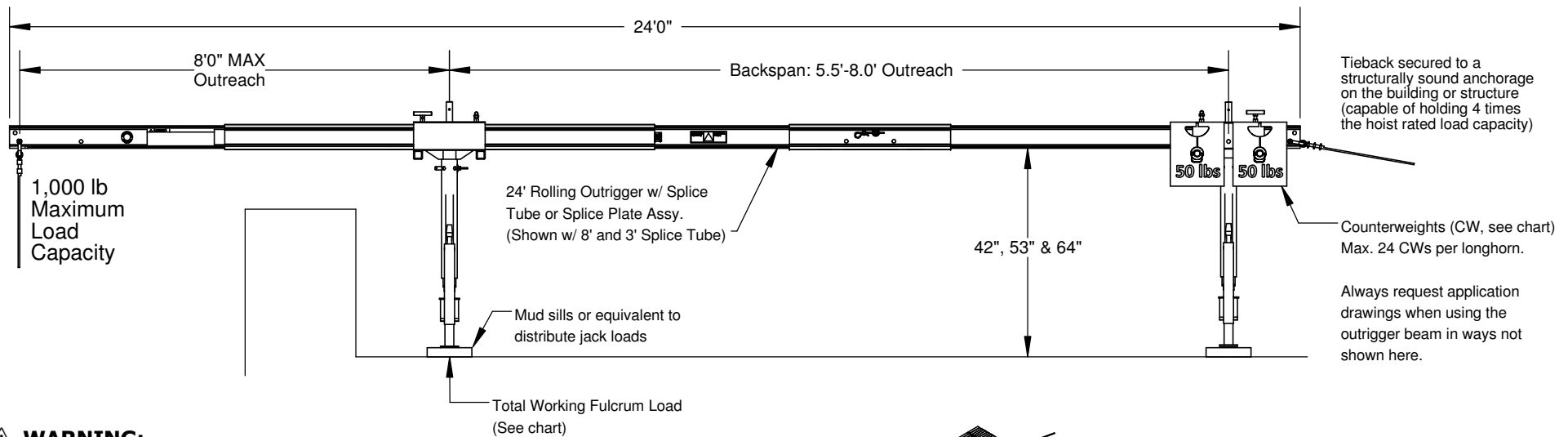
Sheet 3 of 3

Outreach (ft.-in.)	Backspan (ft.-in.)	Total Working Fulcrum Load (lb)	Working Fulcrum Load per Leg (lb)	50 lb CW Required
5'6"	17'0"	1,324	662	25
6'0"	16'6"	1,364	682	29
6'6"	16'0"	1,407	704	32
7'0"	15'6"	1,452	726	36
7'6"	15'0"	1,500	750	40
8'0"	14'6"	1,552	776	44



ITEM NO.	QTY.	PART NO.	DESCRIPTION
1	2	620101	H-Beam, 5x5 Front/Back 8ft
2	1	620102	H-Beam, 5x5 Middle 8ft
3	1	920115	Adjustable Caster Dolly, 5X5
4	1	520112	Base, Adj. Caster Dolly
5	1	920205	Masthead, 5x5 for Splice Tube
6	1	920176	Splice Tube Assembly, 8ft
7	1	920183	Splice Tube Assembly, 3 ft
8*	2	920160	Longhorn Assy., 40in
9	4	520125	Jack Assembly, Caster Dolly
10	4	823104	Scaffold Caster, 8" HD900
11	8	110103	Hitch Pin 5/16" X 2.25"
12	1	110110	Hitch Pin 3/4" X 4.5"
13	TBD	820104	Counterweight, 50 lb
14	2	920150	Outrigger Brace

*Longhorn Assy. includes: (2) 1-3/8" Washers and (3) 5/16"x2.25" Hitch Pins.



⚠ WARNING:

Failure to properly install and use this product may result in death or serious injury. Follow the manufacturer's instruction manual. Suspended Scaffold Systems must be installed and dismantled by, or under the supervision of, a trained and competent person.

Bee Access declines any responsibility for any special layouts, rigging or structural combinations beyond the descriptions of this drawing. Any installation of this equipment other than in strict accordance with this drawing shall be at the Operator's risk.

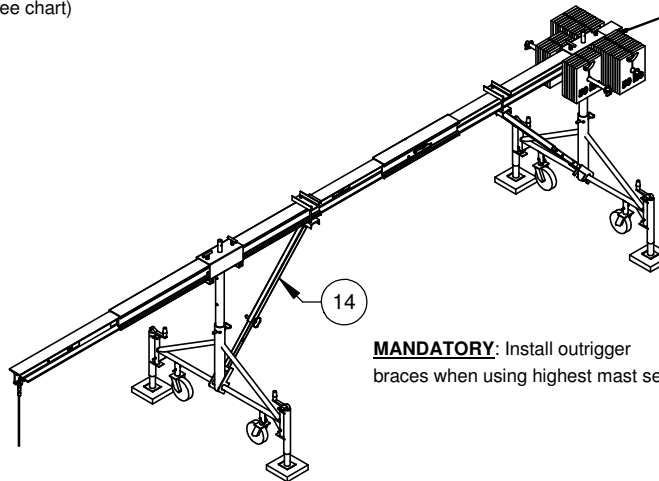
Never let the equipment be moved or operated by unauthorized personnel.

Never load this equipment above its rated load capacity.

Do not alter any products and never use it for purposes or in ways for which it was not intended.

Inspect all equipment before each use. Never use damaged equipment.

Read and comply with the "Code of Safe Practices for Suspended Powered Scaffolds" issued by the Scaffold & Access Industry Association (available from your supplier).



MANDATORY: Install outrigger braces when using highest mast setting.

The information contained in this drawing is the sole property of Bee Access Products. Any reproduction in part or whole without the written permission of Bee Access Products is strictly prohibited.



Bee Access Products

CW Chart 24ft ROB w/ 8ft Splice Tube - 1,000 lb

Scale: 1:35
Do not scale drawing.
Weight: 2321 LBS

Product Line/Project: **Rigging** REV. 1

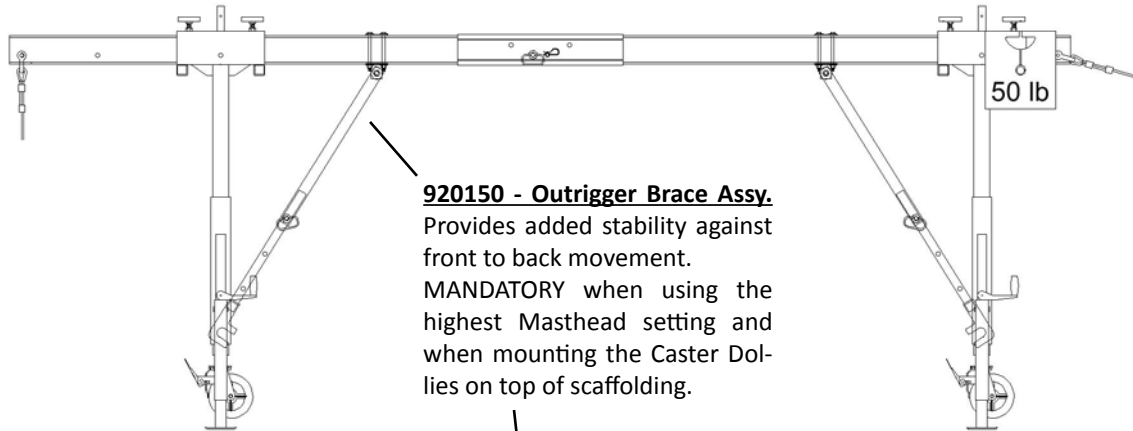
Approvals: Drawn: SBS Date: 04-09-15

Part No. 920528 Sheet 4 of 4

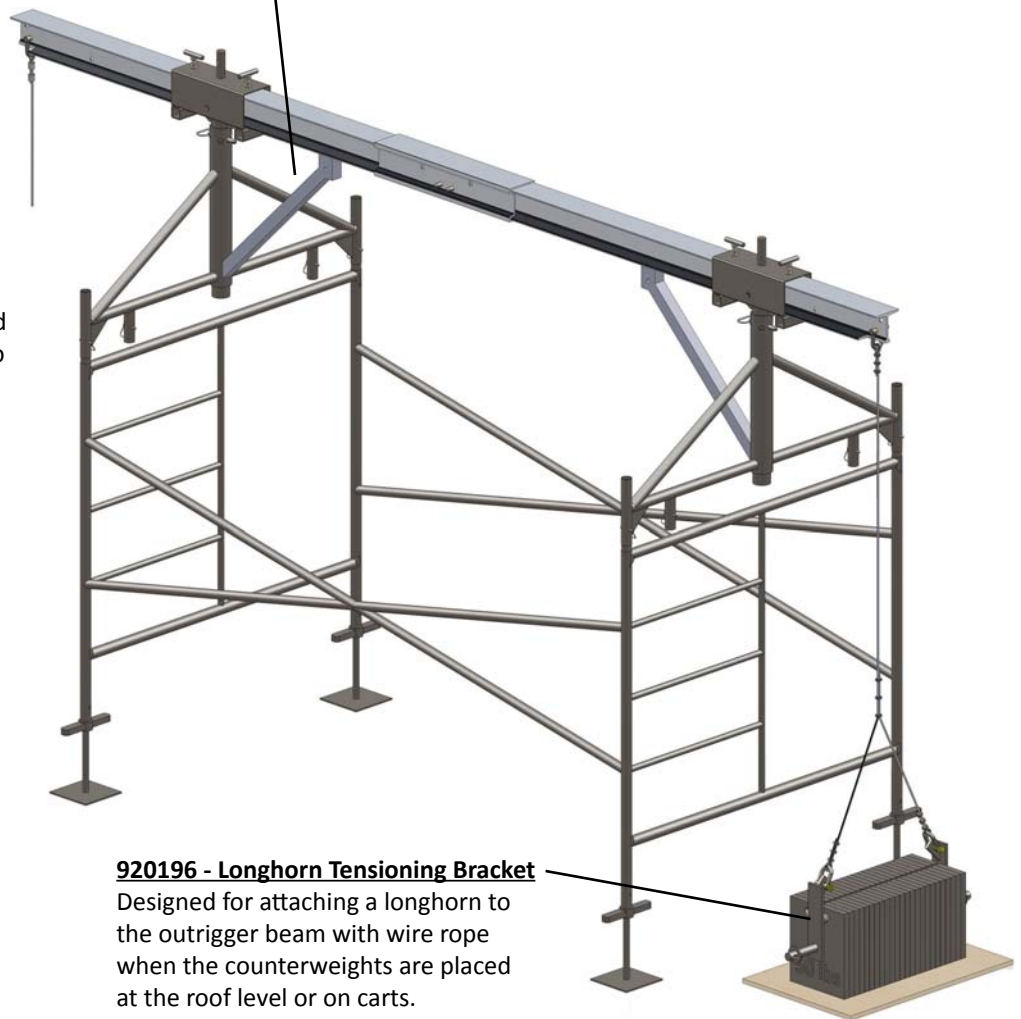


Rolling Outrigger Beam, 5x5

Beam Accessories



Caster Dollies can be mounted on 5 ft wide scaffold frames to clear tall parapets.





Rolling Outrigger Beam, 5x5

Beam Accessories

920184 - EZ Down&Under Assy., 5x5

Max. 9 ft down and 4 ft back under.
Longer down tubes and under
beams also available.



920307 - Flat Free Caster Assy., 12" with brake

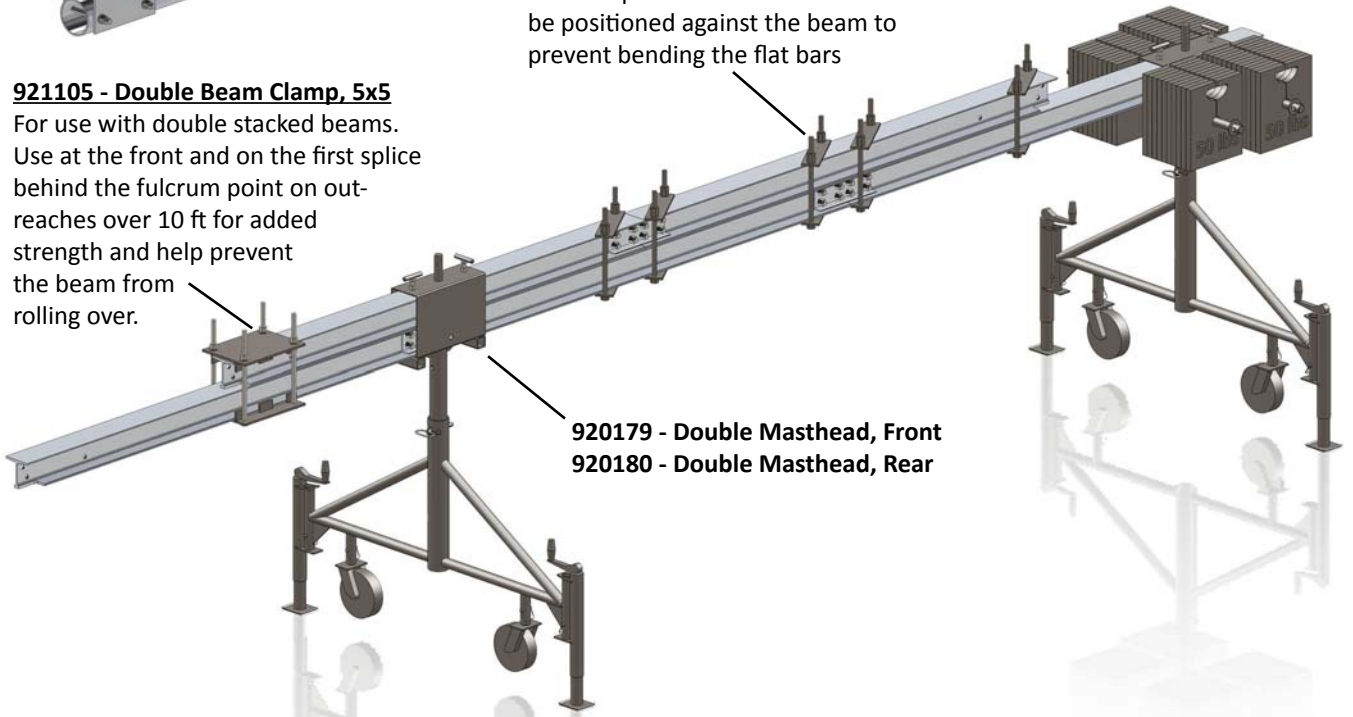


921102 - Beam Clamp, Coiled Rod

Use 2 per splice connection. Angle
the clamps to let the threaded rods
be positioned against the beam to
prevent bending the flat bars

921105 - Double Beam Clamp, 5x5

For use with double stacked beams.
Use at the front and on the first splice
behind the fulcrum point on out-
reaches over 10 ft for added
strength and help prevent
the beam from
rolling over.

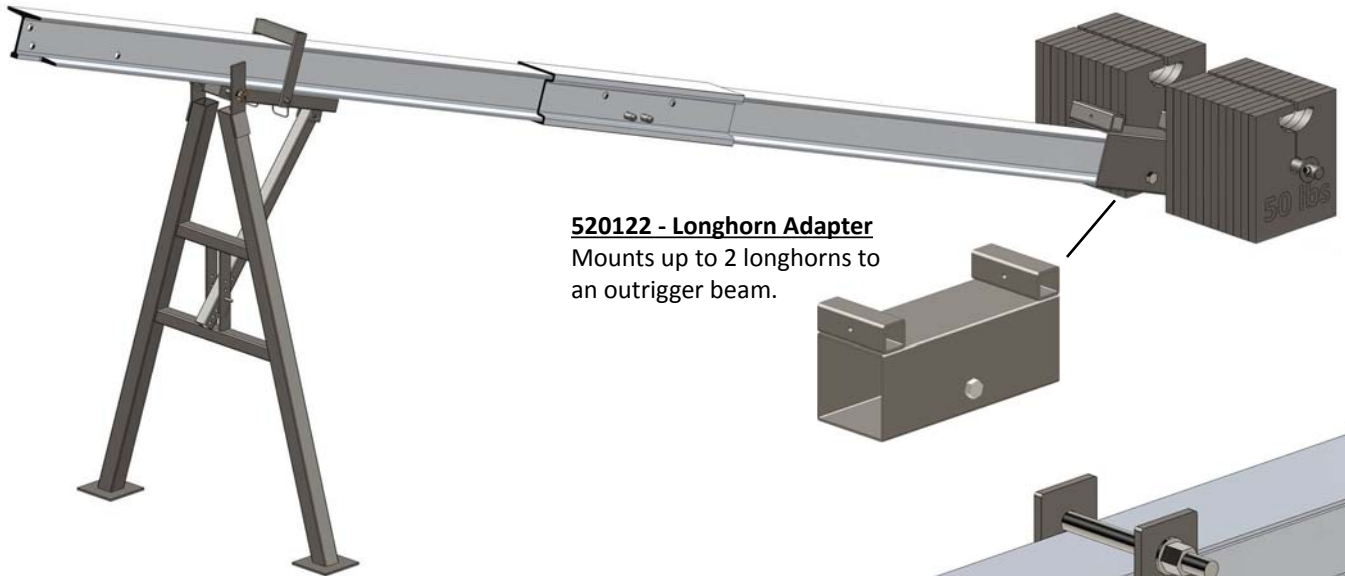


920179 - Double Masthead, Front **920180 - Double Masthead, Rear**



Rolling Outrigger Beam, 5x5

Beam Accessories



520122 - Longhorn Adapter
Mounts up to 2 longhorns to an outrigger beam.

920171 - Tilt-up Beam Stand

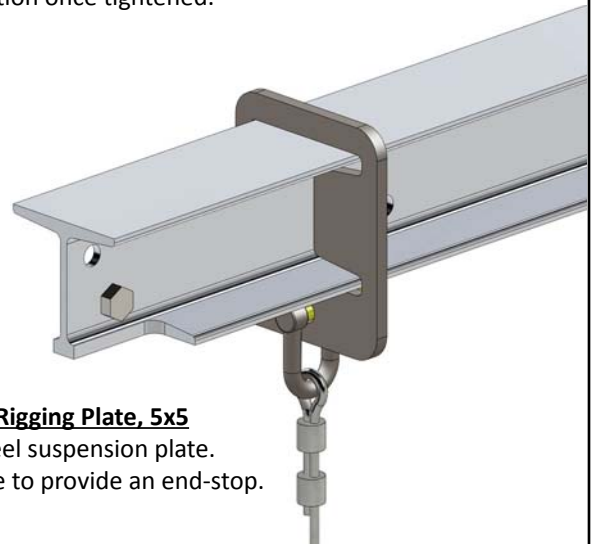
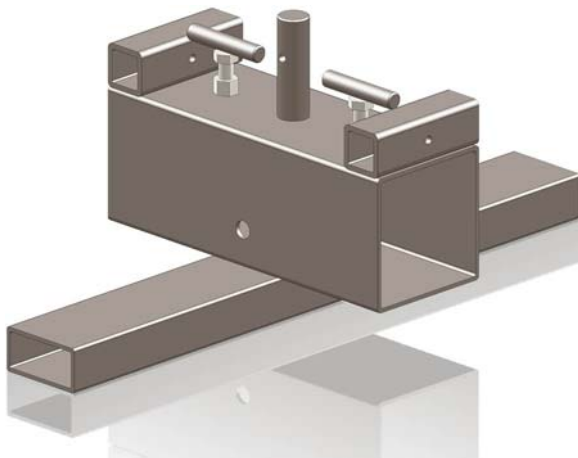
Simplest method for lifting an outrigger beam over a parapet wall. Multiple adjustments for use with a 16 or 24 ft beam assy. Max. outreach: 4'-9" Parapet Clearance at the lowest point: 4'-4".



920165 - Hanger Strap Assy., 5x5
Friction mounted wire rope suspension bracket that will stay in a fixed position once tightened.

920253 - Beam Sleeve, Slide-on

For placing a beam on the roof or on top of parapet walls. Also available:
920251 - Beam Sleeve, Bolt-on
920254 - Beam Sleeve, Double High



920242 - Rigging Plate, 5x5
Sliding steel suspension plate. Make sure to provide an end-stop.